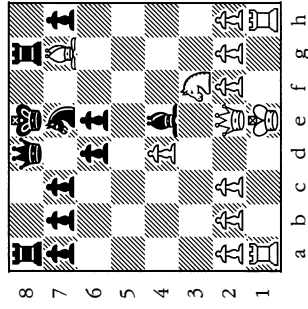
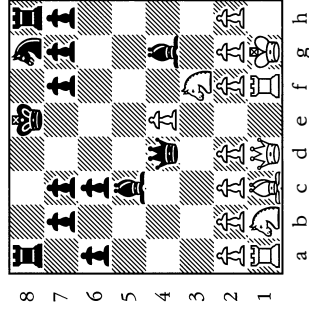


Counting Problems

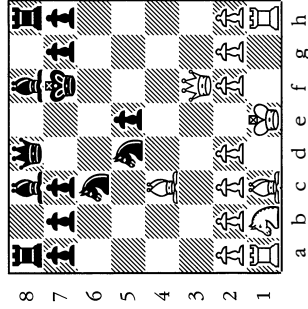
1-1 Black to play and win



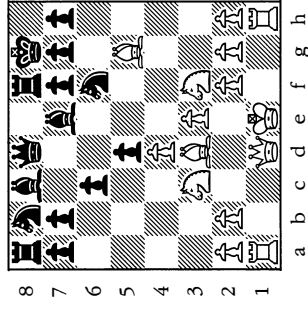
1-2 White to play and win



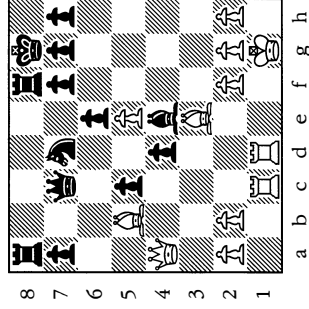
1-3 Black to play and save a piece



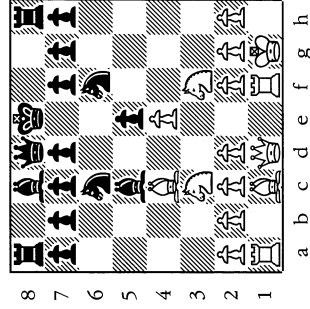
1-4 Black to play; is ...Ne4 safe?



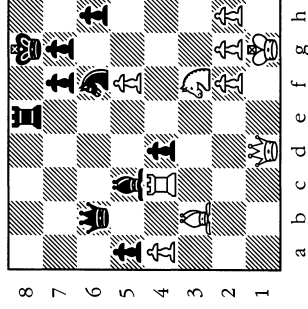
1-5 White to play and win



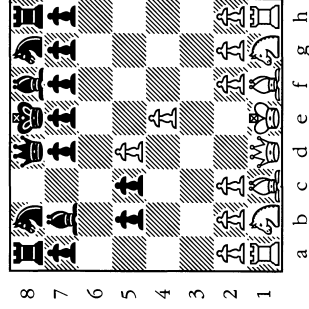
1-6 Can Black play 1...Nxe4 2.Nxe4 d5 and win back his piece?



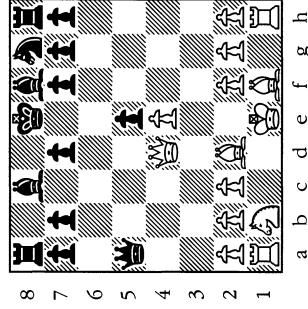
1-7 Can White win the d-pawn?



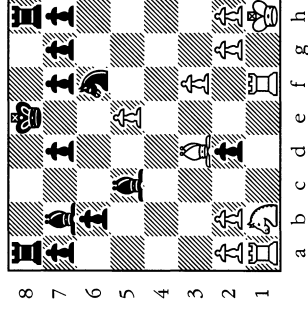
1-8 White to play; is Bxb5 safe?



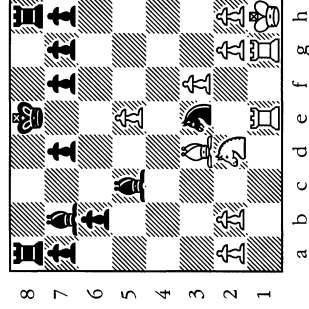
1-9 White to play and win a pawn



1-10 White to play and win



1-11 Black to play; is ...Ng4 good?



1-12 White to play and win a pawn

